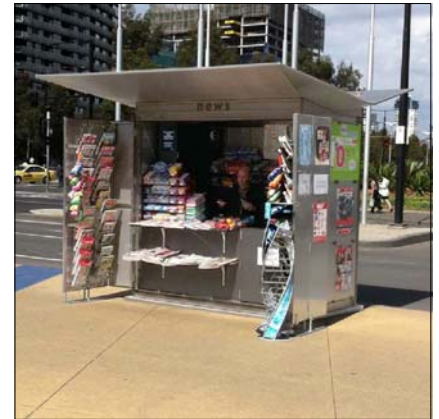


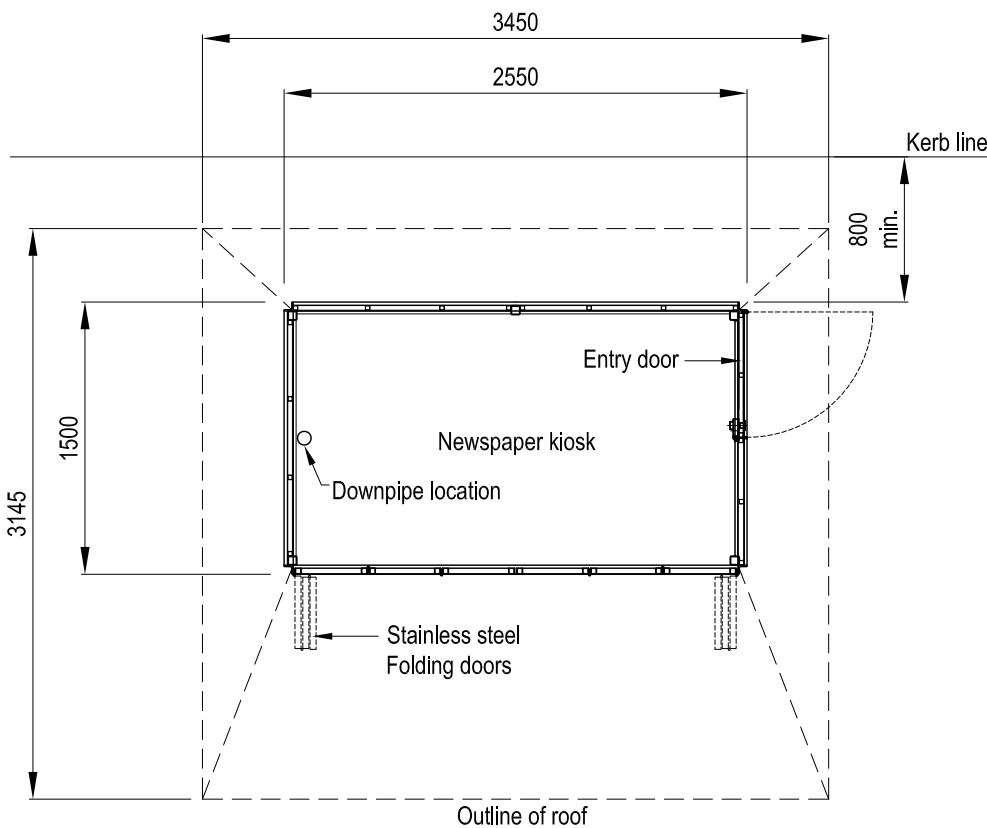
Elevation



The news kiosk is used at key locations in high pedestrian traffic areas within the Central City and Docklands.

The news kiosk is fabricated using grade 316 stainless steel for the frame and linings.

For fabrication & installation drawings, refer to City of Melbourne, City Design drawings; Project No: 902982_F01-12_Newspaper Kiosk



Plan