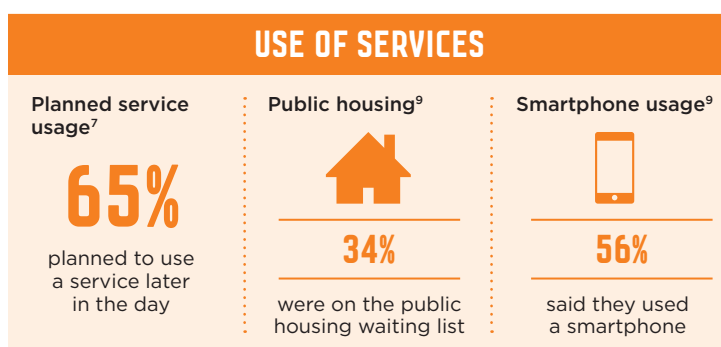
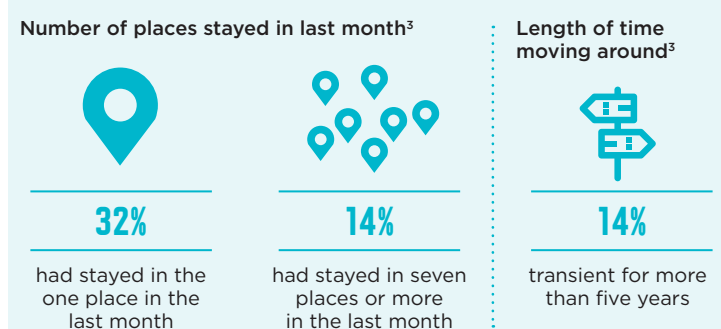
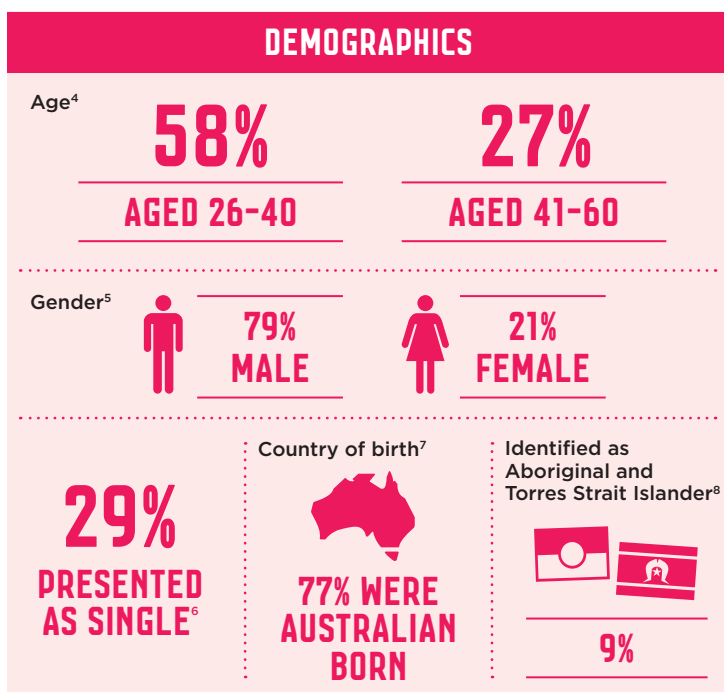
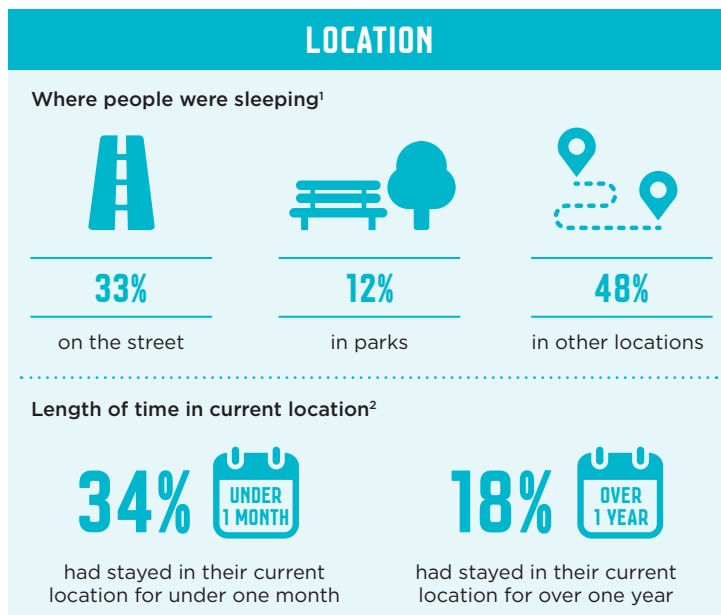
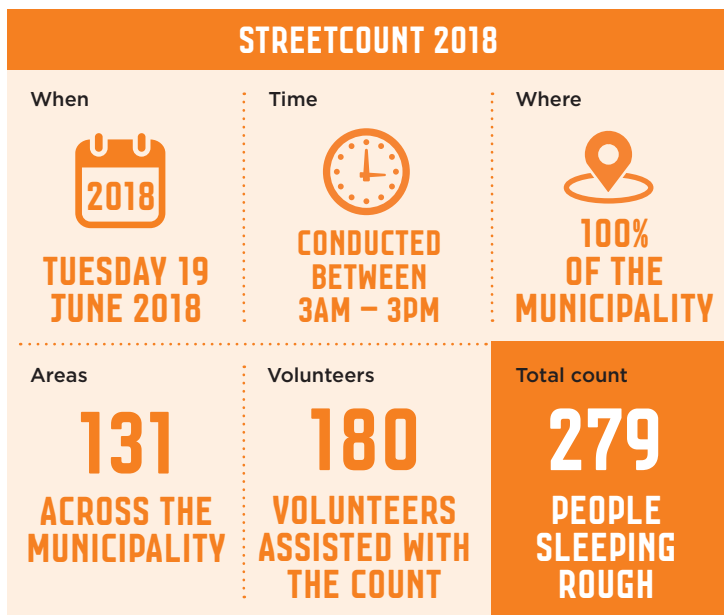


STREETCOUNT 2018: A SNAPSHOT OF PEOPLE LIVING ROUGH

Municipality
of Melbourne

StreetCount 2018 aims to continue to develop an understanding of rough sleeping in Melbourne. This was the eighth count of people sleeping rough in the City of Melbourne since 2008. Thank you to the many volunteers and partner organisations who assisted in StreetCount 2018.



Inner Melbourne Action Plan
Making Melbourne More Liveable



Population numbers varied to each survey question. Population sizes for reference numbers: ¹(279), ²(62), ³(56), ⁴(201), ⁵(218), ⁶(269), ⁷(65), ⁸(64), ⁹(61).
[^]This StreetCount was across the entire municipality. This figure relates to comparison between the same StreetCount areas in 2016 and 2018.