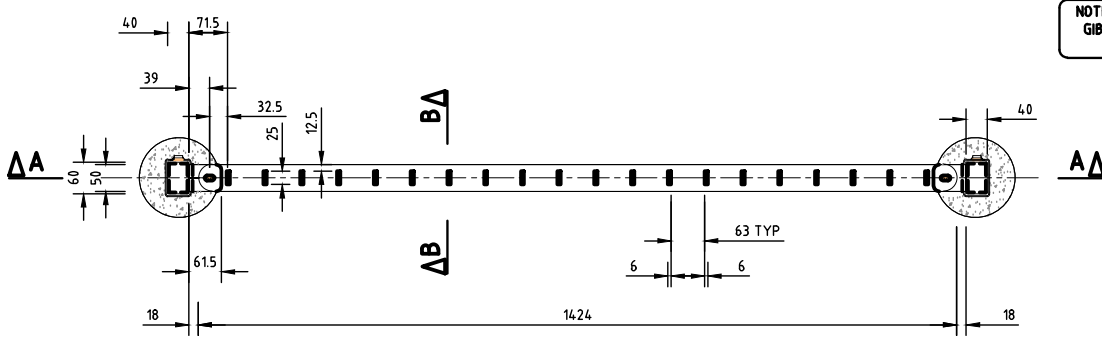
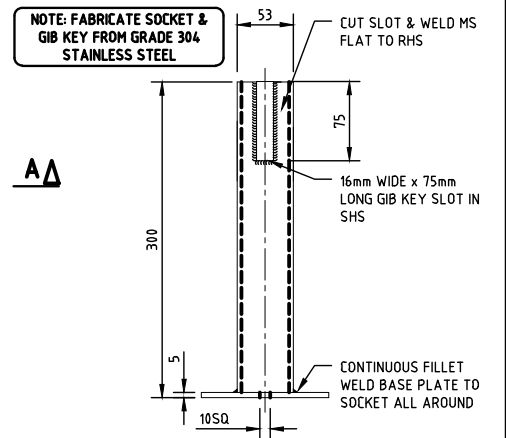


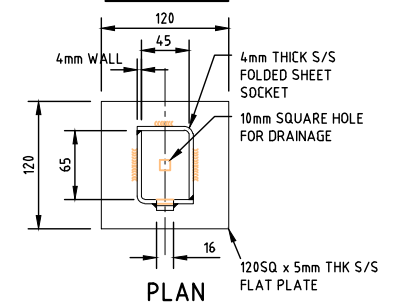
ELEVATION



PLAN



ELEVATION

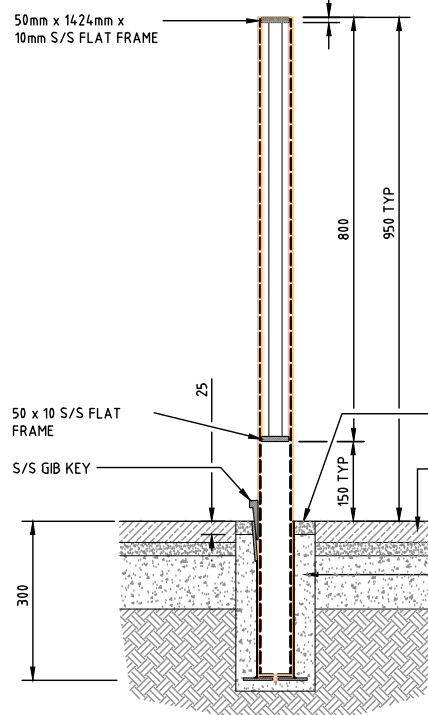


PLAN
300mm SOCKET

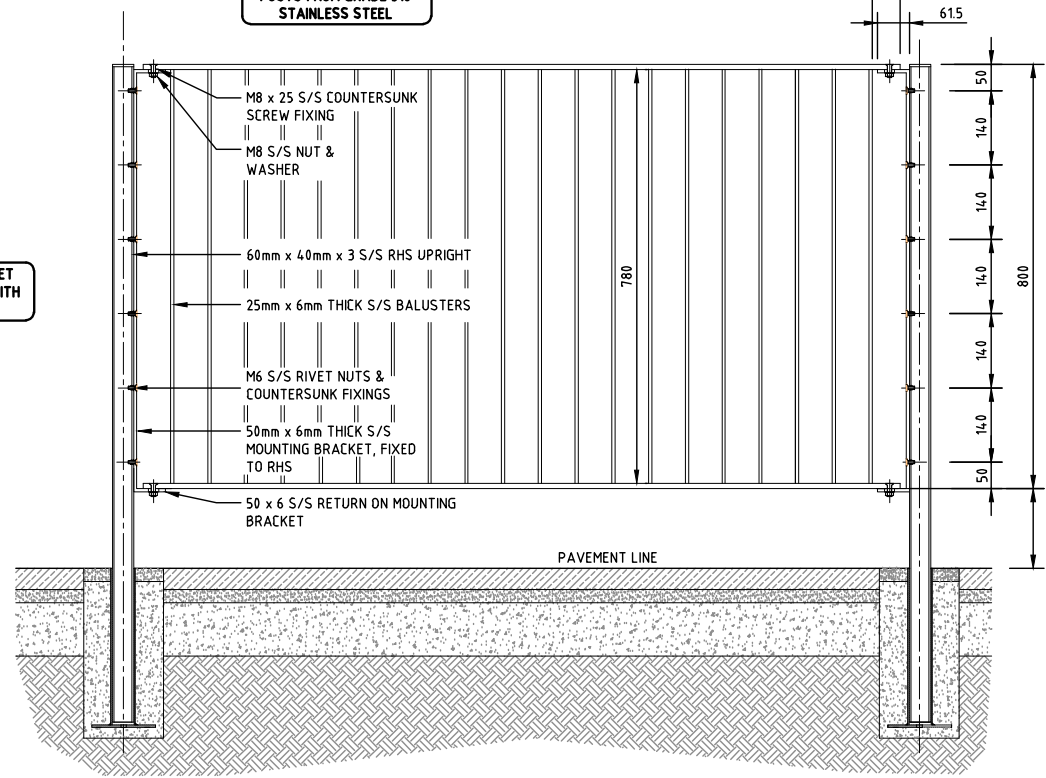
NOTE: FABRICATE FENCE & POSTS FROM GRADE 316 STAINLESS STEEL

NOTE: FABRICATE SOCKET & GIB KEY FROM GRADE 304 STAINLESS STEEL

NOTE: TOP OF S/S SOCKET SHALL BE CAST FLUSH WITH PAVEMENT SURFACE



SECTION B-B



SECTION A-A

150 TO GROUND, TYPICAL ON HORIZONTAL FOOTPATH

- NOTES:**
- CENTERLINE OF HANDRAIL TO BE 600mm OFFSET FROM THE FACE OF KERB
 - S/S - IS ABBREVIATION FOR STAINLESS STEEL
 - ALL STAINLESS STEEL COMPONENTS SHALL BE GRADE 316 UNLESS OTHERWISE SPECIFIED.
 - WELDING OF STAINLESS STEEL FOR STRUCTURAL PURPOSES SHALL COMPLY WITH AS/NZS 1554.6:1994 - STRUCTURAL STEEL WELDING
 - ALL WELDING OF STAINLESS STEEL MUST BE FULL PENETRATION TIG WELDS AND POLISHED
 - STAINLESS STEEL FASTENERS: TO ASTM A240/240M
 - ALL STAINLESS STEEL COMPONENTS & WELDS SHALL BE PICKLED IN ACCORDANCE WITH 6.3.5h3 ASTM-A380 TO REMOVE CONTAMINANTS & HEAT TINT
 - AFTER PICKLING THE STAINLESS STEEL SHALL BE PASSIVATED (TO REMOVE IRON COMPOUNDS)
 - ALL STAINLESS STEEL EXPOSED TO VIEW SHALL THEN BE POLISHED TO A No. 4 SATIN POLISH FINISH WITH A SURFACE ROUGHNESS (Ra) NOT EXCEEDING 0.5µm

NOT TO SCALE



CITY OF MELBOURNE

**PEDESTRIAN SAFETY FENCE
(STAINLESS STEEL TYPE)**

ENGINEERING SERVICES BRANCH

Rev.	Revision Details	By	Date

Approved By		Drawing Number	
Principal Engineer Infrastructure		1P 50514B	
Date		Revision	
Nov, 2014		A	
Date		Docs	
Nov, 2104			